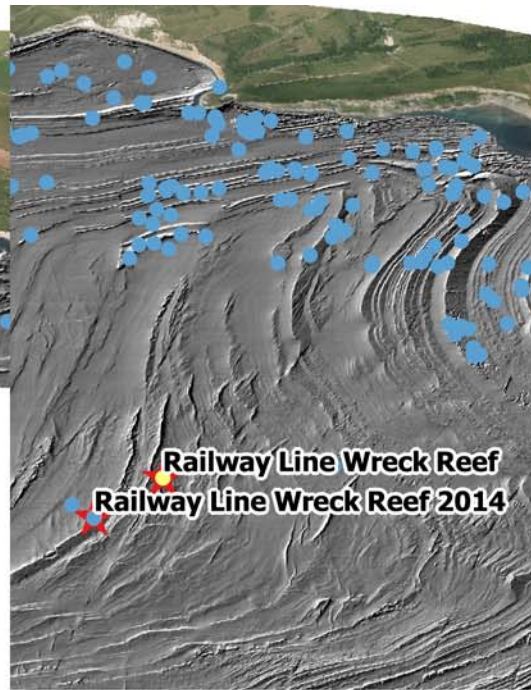


**Perry Ledge Outer Reef**



**Railway Line Wreck Reef**  
**Railway Line Wreck Reef 2014**

Aerial Photograph © Teignbridge District Council. Data/image courtesy of the Southwest Regional Coastal Monitoring Programme. The data sets are supplied under the Open Government Licence. The bathymetric data were derived using data from DORIS (DORset Integrated Seabed survey), a project involving Dorset Wildlife Trust, The Maritime and Coastguard Agency, Channel Coastal Observatory and the Royal Navy, with major funding from Viridor Credits Environmental Company. Other partners include Natural England, Dorset Strategic Partnership, the National Oceanography Centre and University of Southampton.

## Dorset Seasearch Dive Report - 31 July 2016 Perry Ledge Outer Reef, Railway Line Wreck Reef

The day started out calm and bright with a leisurely run over to Perry Ledge just west of Ringstead. The dive there was on a silty reef with just a hint of tide pushing to the west. A bonus was a leisurely scenic tour of one of the best parts of the Jurassic Coast (Durdle Door to Lulworth Cove) during the lunch break as Nick tried to get us out of the slop. We then braved the increasingly lively seas en route to the next site. After some sounding around Nick dropped the shot on the mark. Perfectly timed for a slack dive on the Railway Line Wreck Reef but then a very wet run home against a busy sea.



© Jess Mead, 2016

Battening down the hatches on the port side during the run home from Railway Line Reef



© Nigel Topham, 2016

Perry Ledge Outer Reef  
Typical silty boulders with mixed seaweeds.



© Chris Wood, 2016

Perry Ledge Outer Reef  
The non-native seaweed Solier's Red String Weed (*Soliaria chordalis*) was recorded as frequent.



© Mike Markey, 2016

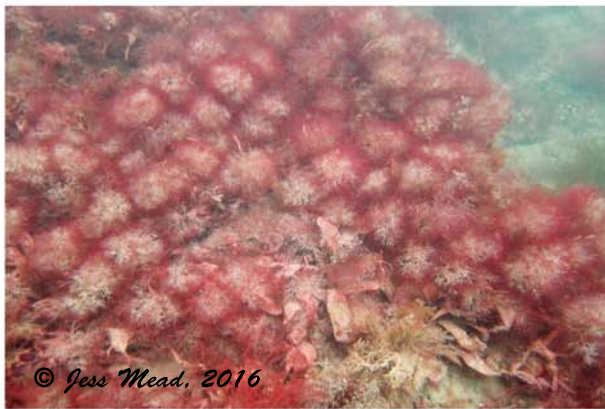
Perry Ledge Outer Reef  
Large, pitted silty boulders providing good shelter for Rock Cook and Goldsinny



Perry Ledge Outer Reef  
A juvenile Spotted Ray the size of a saucer hiding in the soft muddy sediment at the base of the reef in about 15m. There was a lot going on in the mud: lots of worms, burrowing brittlestars and the burrowing anemones *Edwardsia claparedii* and *Peachia hastata*



Perry Ledge Outer Reef  
Silty boulder with a range of sponges and mixed seaweeds.



Perry Ledge Outer Reef  
Red seaweeds were a feature of the site. Here the pompoms of the Falkenbergia stage of the non-native Harpoon weed (*Asparagopsis armata*) smother a silty boulder.



Railway Line Wreck Reef  
Rippled medium sand washed into mega-ripples up to 1.5m high



Railway Line Wreck Reef  
Very low bedrock ledges supporting a variety of branching and cushion sponges, almost inundated by clean, mobile, medium sand.



Railway Line Wreck Reef  
Branching and cushion sponges crowded onto smooth bedrock.

Railway Line Wreck Reef  
A substantial colony of the nationally scarce sponge *Adreus fascicularis* on bedrock buried in clean, mobile sand.





Railway Line Wreck Reef  
The scour tolerant bryozoan *Vescicularia spinosa* (Lamb's Tails) on bedrock virtually buried in mobile sand



Railway Line Wreck Reef  
Small branching sponges on smooth bedrock.



Railway Line Wreck Reef  
A small sponge colony before and after wafting of overlying layer of clean mobile sand showing smooth bedrock beneath

Railway Line Wreck Reef  
Nut crab (*Ebalia* sp)  
about the size of a 50p piece  
crawling around on the sand.



## First Dive details:

### Perry Ledge Outer Reef (2km south west of Ringstead)

**Position:** 50° 37.40'N 002° 22.47'W (dive boat GPS, WGS84)

**Overview:** Thoroughly bioturbated muddy, fine sand grading into low reef of cobbles becoming bedrock reef with boulders and cobbles. Silty, reef with mixed seaweeds and short faunal turf.

**Interesting/unusual species:** non-native red seaweeds were a feature of the site with Solier's Red String Weed (*Solieria chordalis*) and the Falkenbergia stage of Harpoon weed (*Aspargopsis armata*) prominent. Juvenile spotted ray (*Raja montagui*)

**Human impact:** potting in the vicinity.

## Second Dive details:

### Railway Line Wreck Reef (4km south of Worbarrow Tout west of Kimmeridge)

**Position:** 50° 34.74'N 002° 11.41'W (dive boat GPS, WGS84)

**Overview:** part of the site covered by huge waves of clean, rippled medium sand with scattered shell. Three of the six pairs of divers located low bedrock reef with densely packed erect branching and cushion sponges and the bryozoan *Vescicularia spinosa* (Lamb's Tails).

**Interesting/unusual species:** large colonies of the nationally scarce sponge *Adreus fascicularis*.

**Human impact:** potting in the vicinity.

**Thanks to:** Nick Bentall & Lucy Collins (skipper & crew, Scimitar), the organiser Charlotte Bolton and the divers: Lin Baldock, Charlotte Bolton, Des Curran, Bryan Knight, Mike Markey, Jess Mead, Nigel Topham, Simon Loveday, Fiona Ravenscroft, Tim Watson, Chris Wood, Richard Yorke.